

CHANGING PLACES

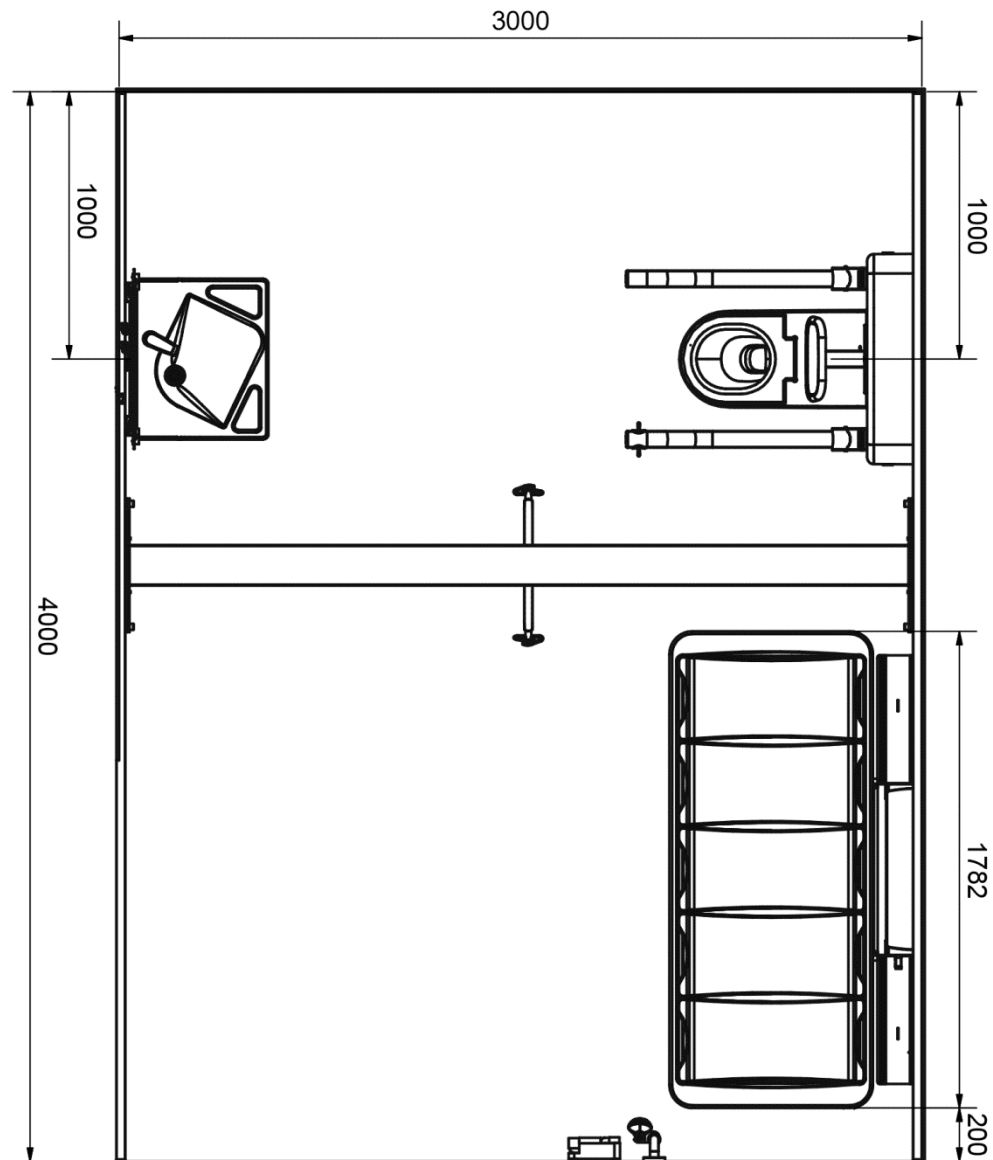


CHANGING CONCEPTS

Concept Description:

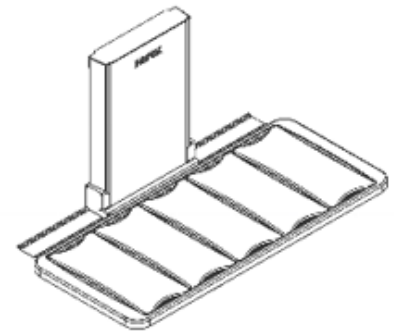
This layout is as recommended in the BS8300 British Standard.

It's intended to provide a room with sufficient space to have a person with disabilities and one or two carers to assist in toileting and changing/showering. It has a peninsular toilet, adjustable height accessible washbasin and wall mounted Shower and Changing Bed. All parts accessible with the help of a complete room covering overhead hoist system.



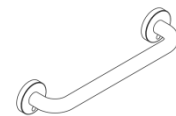
ROPOX Changing and Shower bed, wall mounted, tilt able incl. flexible waste kit and hand control

Electrical height adjustment 30-100cm
Length 178cm
Lying area is 18cm shorter
5 slats, double sided - tilt able
Maximum user weight of 220kg



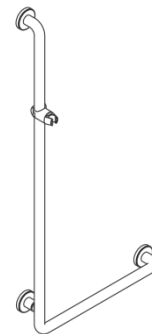
ROPOX Grab Rail

60cm grab rail
Available in white or grey
Smooth surface, easy to clean



ROPOX Shower Rail

L-shaped grab rail with shower holder
100cm x 45cm
Available in white or grey
Smooth surface, easy to clean



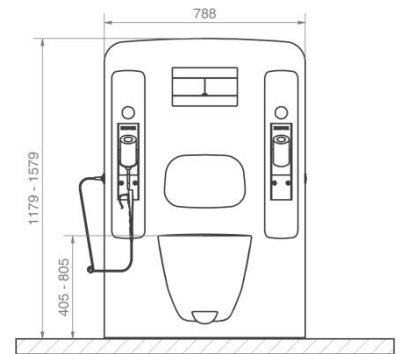
ROPOX Toilet Support Arms – Wave 80

Maximum user weight of 80kg.
Fold up; wall mounted without wall support, Length 90cm.



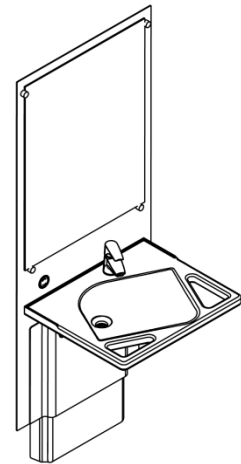
ROPOX Toilet Lifter, Electric

Electrical height adjustment 40.5 to 80.5cm
Unit size in bottom position: 118 x 79 x 20.5cm
Hand control may be placed in left or right side as required
Flushing 3 or 6 litres
Colour of unit is white



ROPOX SlimLine washbasin

Electrical height adjustable washbasin (range 70-100cm) with mirror in a combined unit
Models with washbasin comes with mixer tap, flexible connecting hoses, and flexible waste.



Guldmann GHZ

Safe working load of 255kg
Operation via hand control
Hoist unit weight 8Kg
Charge via hand control
Impact-resistant UL 94 V-0 flame retardant recyclable plastic



Guldmann Lifting Hanger

Lifting capacity up to 375kg
Four suspension points ensure safe, easy attachment of slings
Lifting hanger is available in XS, S and M sizes
Functional design with soft, unbroken surfaces that make it easy to handle and clean

